



Solid State Devices, Inc.

14701 Firestone Blvd * La Mirada, CA 90638
 Phone: (562) 404-4474 * Fax: (562) 404-1773
 ssdi@ssdi-power.com * www.ssdi-power.com

SDA172HF series

Designer's Data Sheet

Part Number/Ordering Information ^{1/}

SDA172 **HF**

└─ Screening ^{2/}
 ─ = Not Screened
 TX = TX Level
 TXV = TXV Level
 S = S Level

Reverse Recovery
 HF = Hyper Fast

Family/Voltage
 J = 600 V
 K = 700 V
 L = 800 V
 M = 900 V

30 nsec
1.3 Amp
Single Phase Bridge
Rectifier Assembly

FEATURES:

- Reverse Recovery Time: 30 ns Max
- Average Output Current: 1.3 Amps
- PIV: 600 to 900 Volts
- Hermetically Sealed Internal Discretes
- Thermal Conductive Epoxy Encapsulated
- Surface or Radial Mounting*
- Available in Higher Voltages
- Available in Ultra Fast, Fast, and Standard Recovery

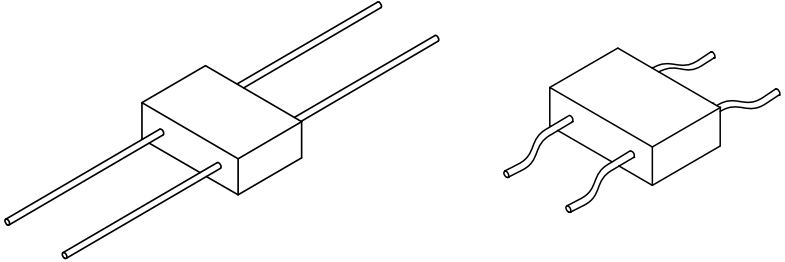
*For surface mounting add -2 to part number.

| Electrical Characteristics | | Peak Inverse Voltage (per leg) | Average DC Output Current T _C =Case Temp | | Reverse Recovery Time | Peak Forward Surge Current (1 Cycle) | Maximum Forward Voltage (per leg) @ 1.0 ADC | Maximum Reverse Current (per leg) @ PIV | |
|------------------------------------|-----------|--------------------------------|--|-------|-----------------------|--------------------------------------|---|---|-------|
| | | | 50°C | 100°C | | | | 25°C | 100°C |
| Part Number | | Volts | Amps | Amps | ns | Amps | Volts | µA | µA |
| SDA172J SDA172J-2 | HF | 600 | 1.3 | 1.0 | 30 | 25 | 1.9 | 10 | 200 |
| SDA172K SDA172K-2 | HF | 700 | 1.3 | 1.0 | 30 | 25 | 1.9 | 10 | 200 |
| SDA172L SDA172L-2 | HF | 800 | 1.3 | 1.0 | 30 | 25 | 1.9 | 10 | 200 |
| SDA172M SDA172M-2 | HF | 900 | 1.3 | 1.0 | 30 | 25 | 1.9 | 10 | 200 |

NOTES:

1/ For ordering information, price, and availability - contact factory.

2/ Screening based on MIL-PRF-19500. Screening flows available on request.



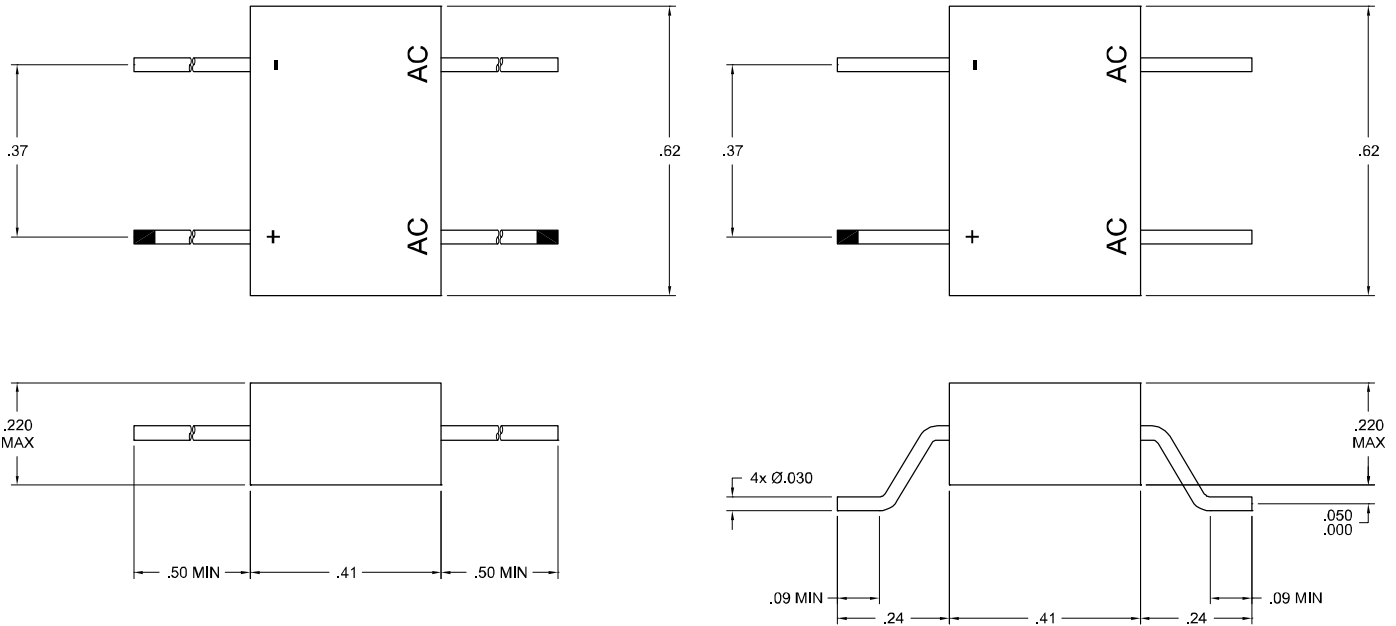


Solid State Devices, Inc.

14701 Firestone Blvd * La Mirada, CA 90638
Phone: (562) 404-4474 * Fax: (562) 404-1773
ssdi@ssdi-power.com * www.ssdi-power.com

SDA172HF series

SDA172J through SDA172M:



*For information on curves, contact the Factory Representative for Engineering Assistance.

Design Notes:

Operating Temperature T_{OP} -55 °C to +150 °C

Reverse Recovery Time $I_F = 500mA$, $I_R = 1.0$ Amp, $I_{rr} = 250mA$

NOTE: All specifications are subject to change without notification. SCD's for these devices should be reviewed by SSDI prior to release.

DATA SHEET #: RA0103A

DOC